

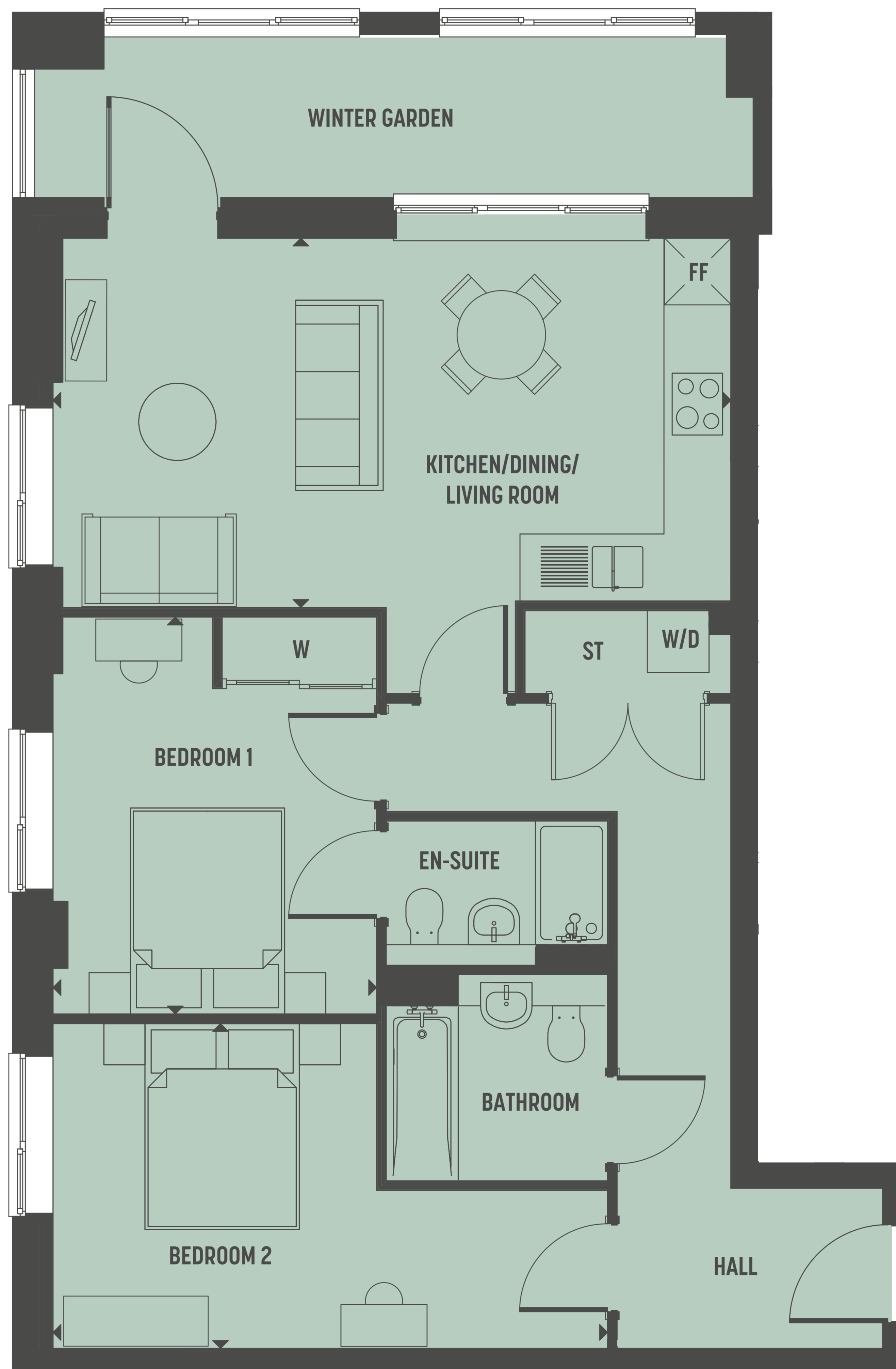
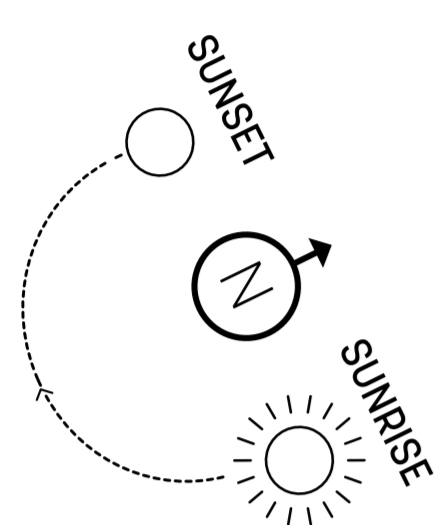
THE CHERRY BLOSSOM BUILDING

**TIMBER
WORKS**

CROMWELL ROAD - ROMSEY CB1

PLOT E34 - 2 BEDROOM

FOURTH FLOOR



PLOT E34 - 2 BEDROOM	M	FT
KITCHEN/DINING/LIVING ROOM	6.58 X 3.58	21'7 X 11'8
BEDROOM 1	3.14 X 3.86	10'3 X 12'7
BEDROOM 2	5.38 X 3.15	17'7 X 10'4

W = WARDROBE
 W/D = WASHER DRYER
 ST = STORAGE
 ▶ = MEASURING POINTS
 FF = FRIDGE FREEZER

