

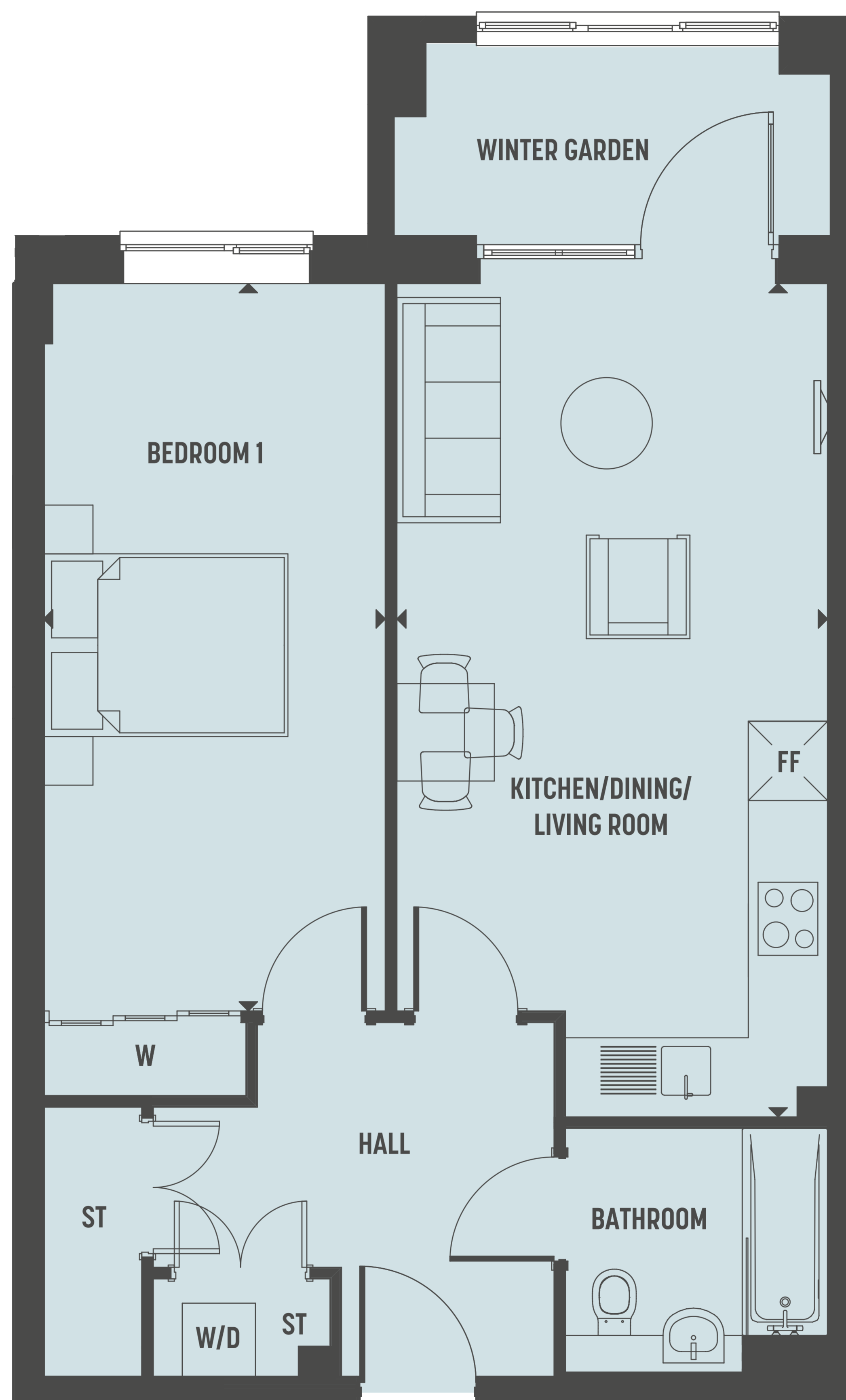
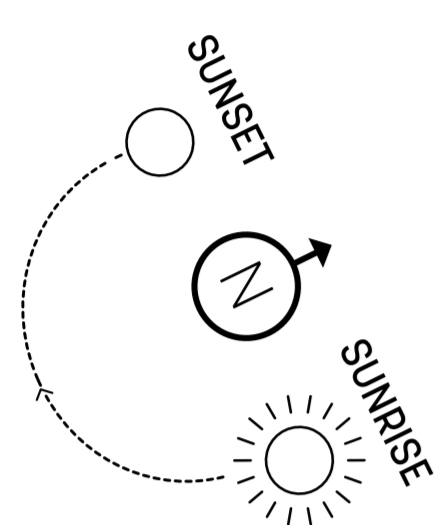
# THE CHERRY BLOSSOM BUILDING

**TIMBER  
WORKS**

CROMWELL ROAD - ROMSEY CB1

**PLOT E35 - 1 BEDROOM**

**FOURTH FLOOR**



<b>PLOT E35 - 1 BEDROOM</b>	M	FT
KITCHEN/DINING/LIVING ROOM	3.53 X 6.84	11'6 X 22'5
BEDROOM 1	2.80 X 5.97	9'2 X 19'7

W = WARDROBE   
 W/D = WASHER DRYER   
 ST = STORAGE   
 ▴ = MEASURING POINTS   
 FF = FRIDGE FREEZER

